

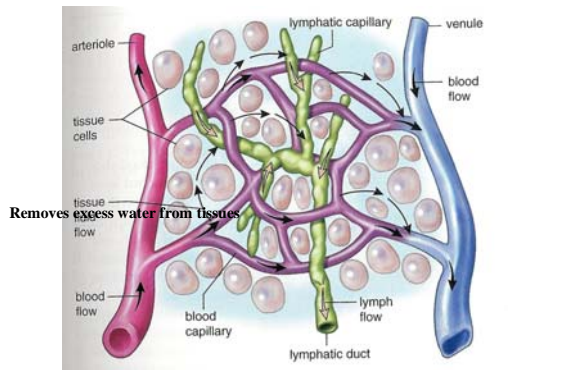
LYMPHATIC SYSTEM

- REMOVES EXCESS FLUID FROM TISSUES
- CARRIES IMMUNE SYSTEM MOLECULES
- DESTROYS PATHOGENS
- ABSORBS FATS

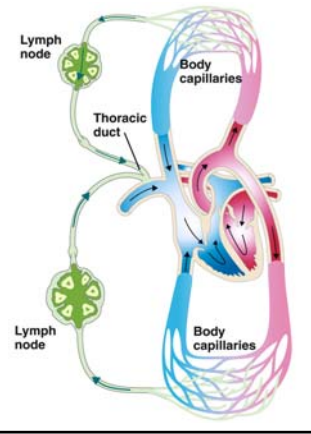
Lymphatic System

Lymphatic System

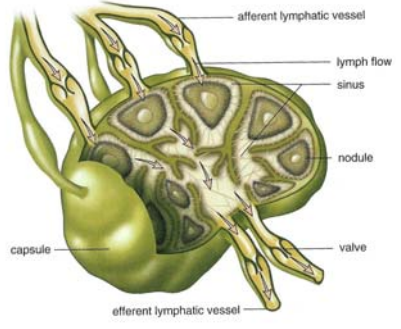
Lymphatic Capillaries



Lymphatic System

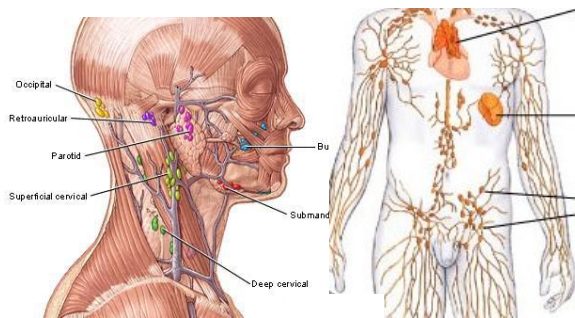


Lymph Nodes

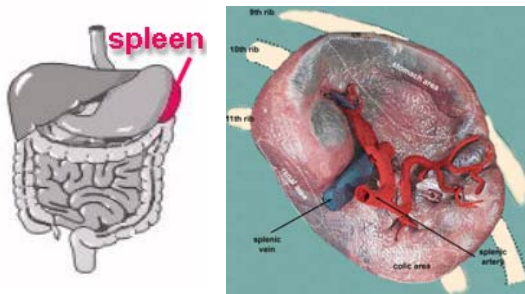


Macrophages inside nodes engulf pathogens

Lymph Nodes



Spleen



SPLEEN- MACROPHAGES ENGULF RED BLOOD CELLS

Splenic Circulation

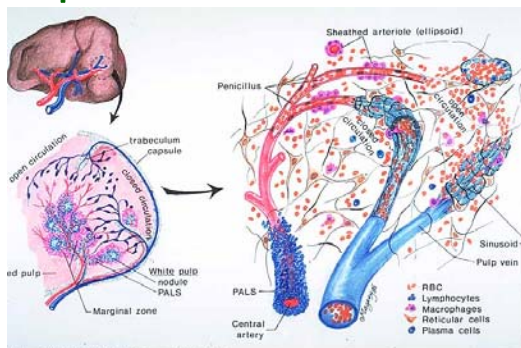
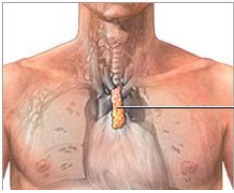
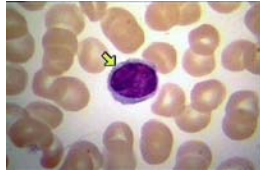


Figure 18. Histological structure of the spleen.

Thymus

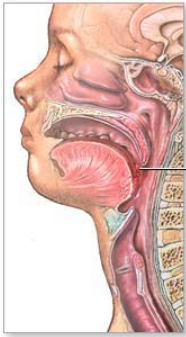


Thymus

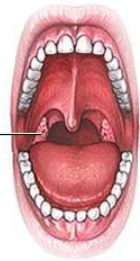


T- LYMPHOCYTES
HORMONES

Tonsils

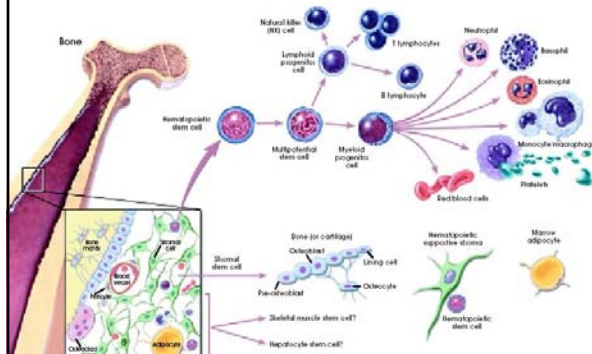


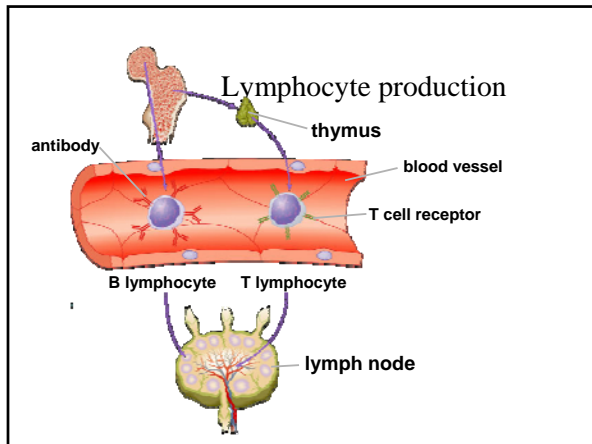
Tonsil

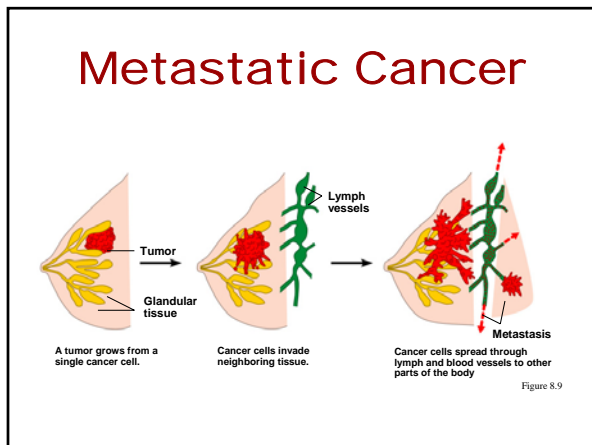


ADAM.

Red Bone Marrow







Cancer Treatments

Chemotherapy uses drugs that disrupt cell division

Radiation therapy disrupts cell division
