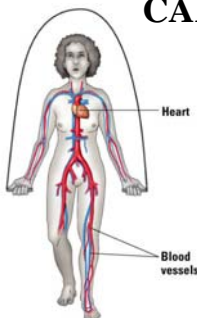


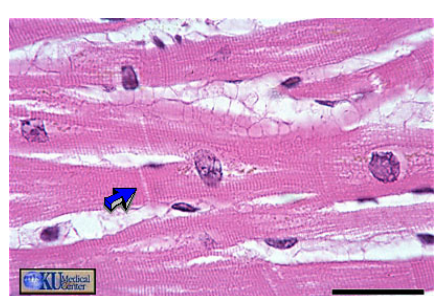
CARDIOVASCULAR SYSTEM



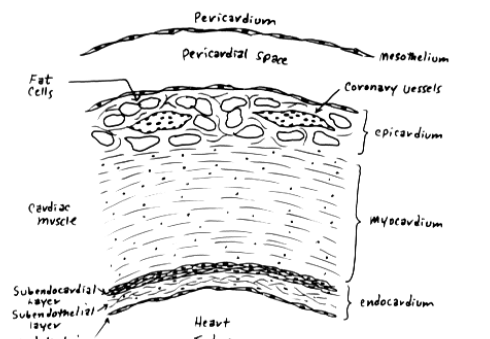
Heart & Blood Vessels

(c) Circulatory system: transports substances throughout body
Copyright © 2004 Pearson Education, Inc., publishing as Benjamin Cummings.

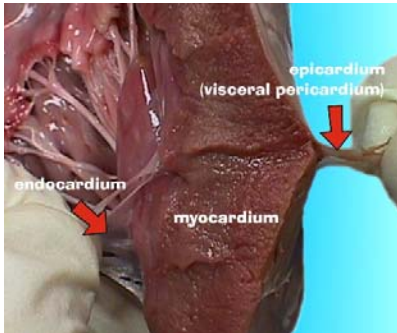
CARDIAC MUSCLE TISSUE



Heart Wall

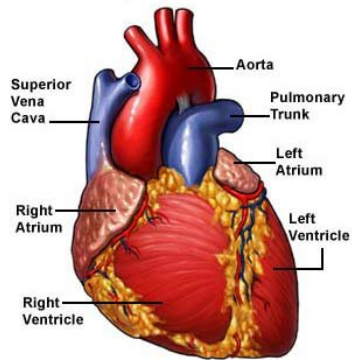


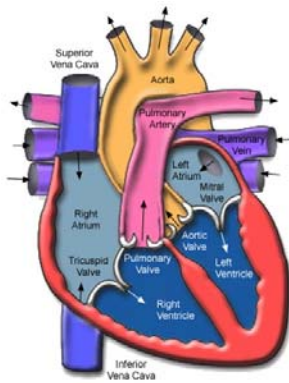
HEART WALLS

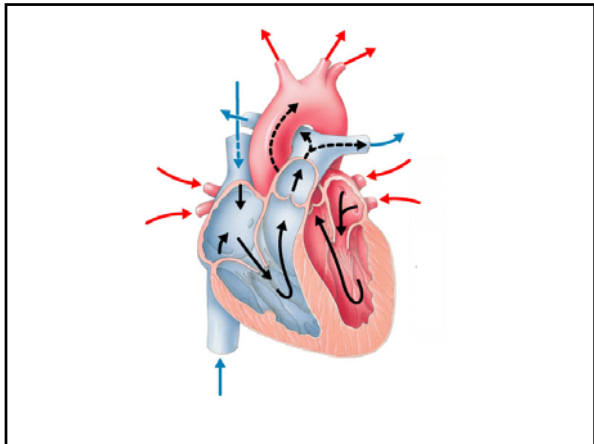


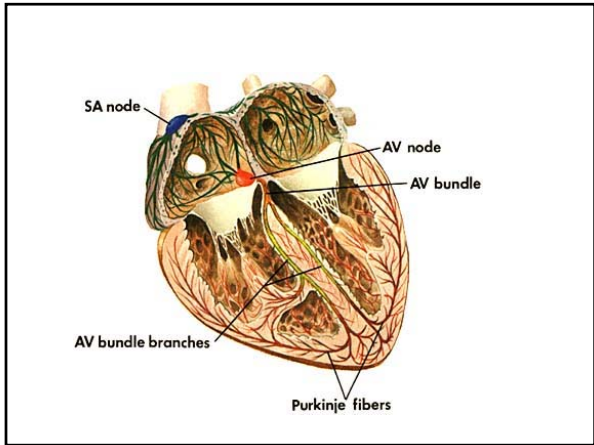
Anatomy of the heart

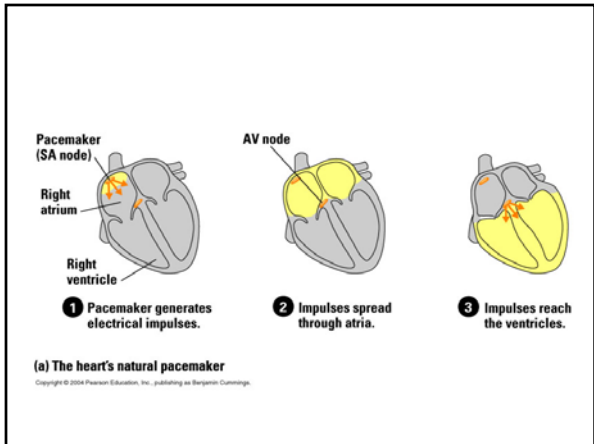
Anterior (front) view

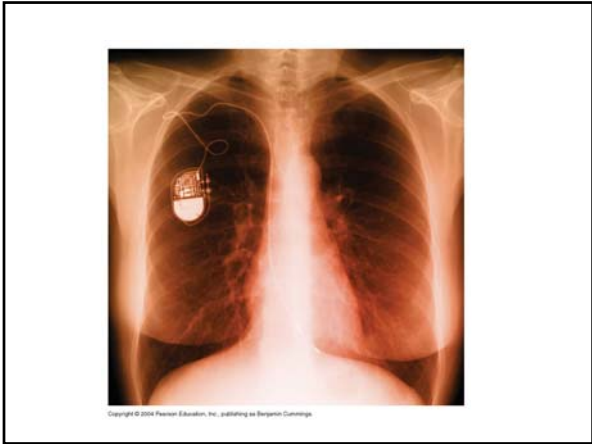


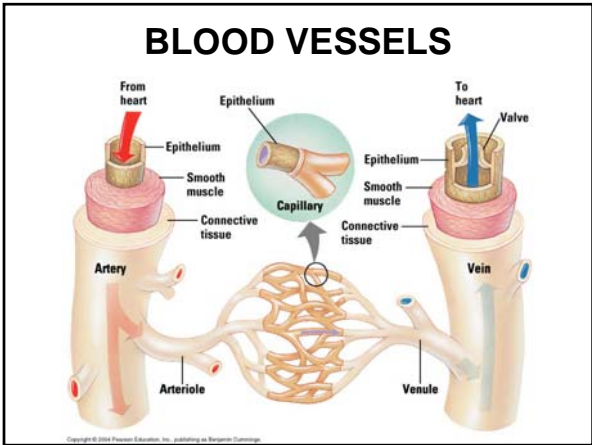


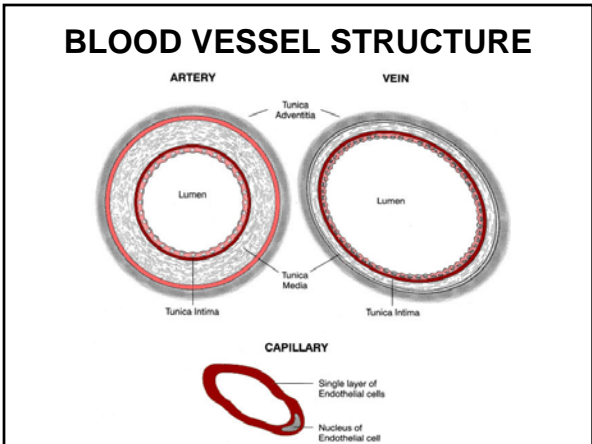


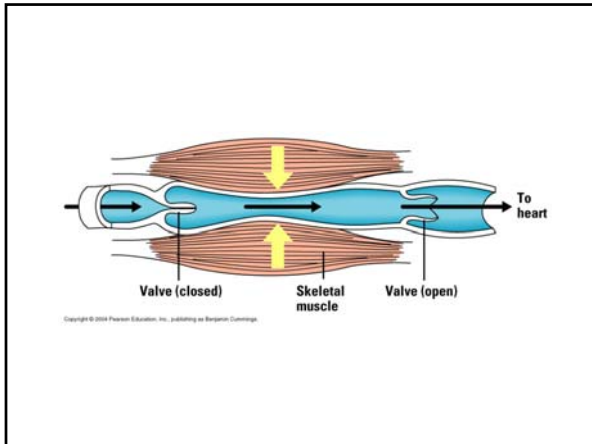


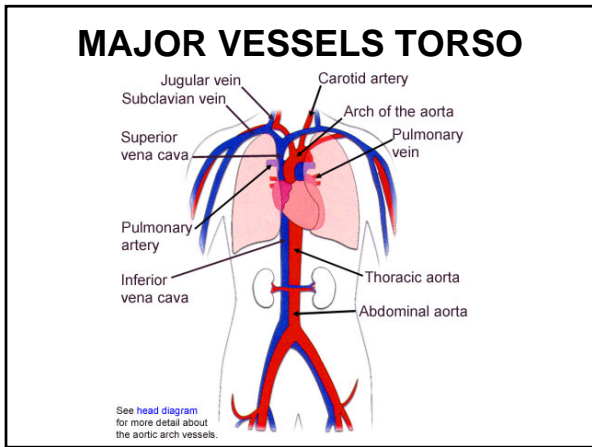


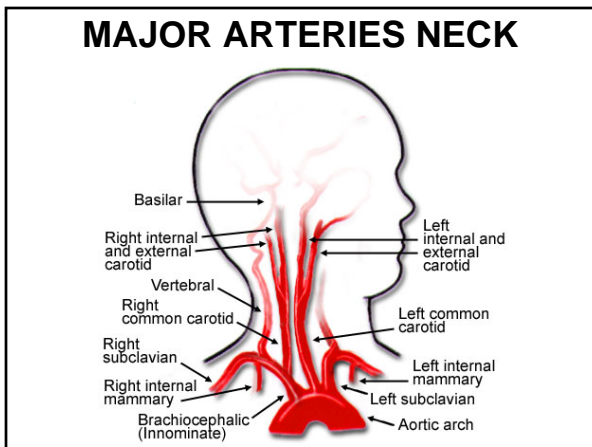


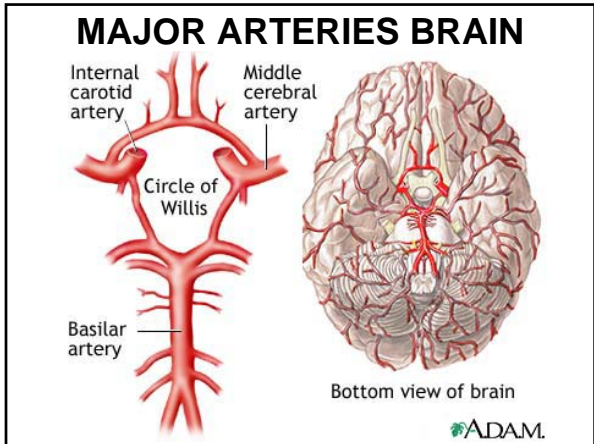


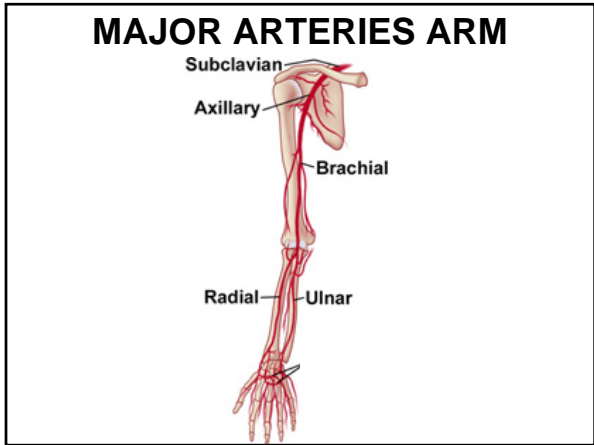


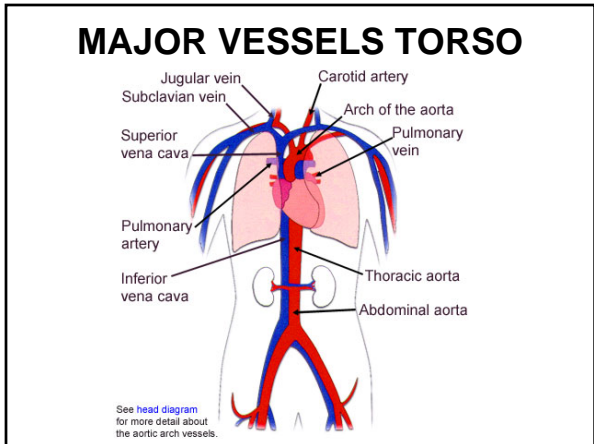




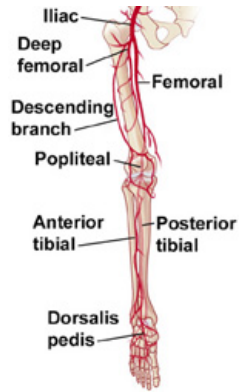




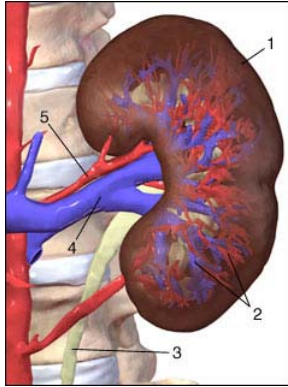




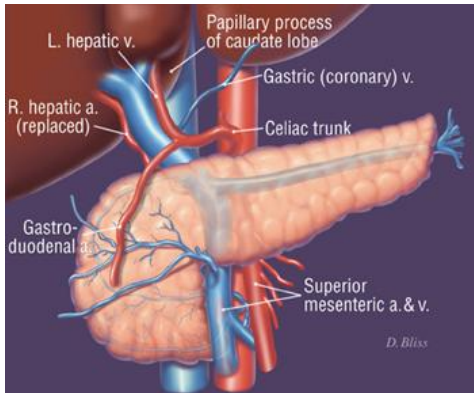
MAJOR ARTERIES LEG



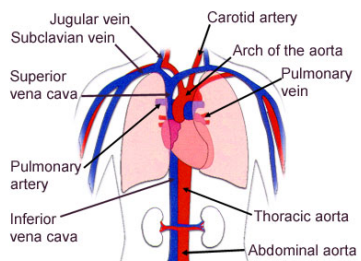
MAJOR ARTERIES KIDNEY



MAJOR VESSELS PANCREAS

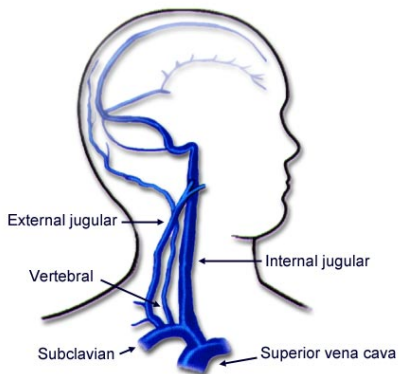


MAJOR VESSELS TORSO

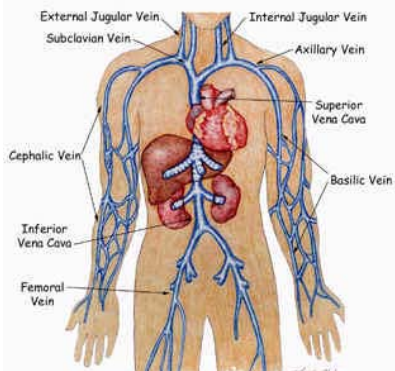


See head diagram for more detail about the aortic arch vessels.

MAJOR VEINS NECK

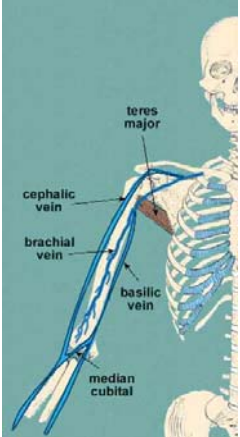


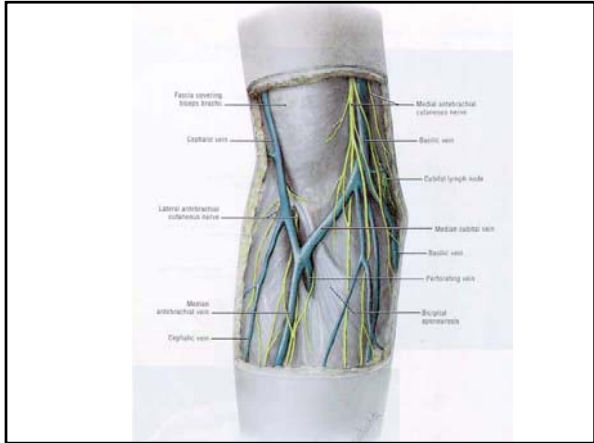
MAJOR VEINS TORSO



© venousaccess.com 2001

MAJOR VEINS ARM





MAJOR VESSELS LEG

